



Fullriver Battery Manufacture Co Ltd

AGM, GEL, & DEEP CYCLE BATTERIES



**A full range of VRLA batteries from 1.2Ah - 3000Ah
in 12 volt, 6 volt & 2 volt cells.**

**Distributed by one of Australia's largest privately
owned Battery companies.**



Battery Type	Volts	Rated Capacity (20hr 1.75v / Cell)(Ah)	Dimensions				Weight (KG)	Terminal Type
			L (mm)	W (mm)	H (mm)	Total H (mm)		
HGL Series - Sealed Lead Acid Batteries (AGM)								
HGL 1.2-6	6	1.2	97	24	52	58	0.32	F1
HGL 3.2-6	6	3.2	134	34	61	67	0.71	F1
HGL 4-6C	6	4	70	47	98	104	0.83	F1
HGL 5-6	6	5	70	47	101	107	0.93	F1
HGL 5-6B	6	5	67	67	97	115	0.92	Spring
HGL 7.5-6	6	7.5	151	34	95	101	1.40	F1
HGL 12-6	6	12	151	50	95	101	2.07	F1
HGL 14-6TH	6	14	108	71	140	140	2.80	TH
HGL 14-6TS	6	14	108	71	140	140	2.80	TS
HGL 20-6	6	20	157	83	125	125	4.00	F3
HGL 180-6B	6	180	260	180	254	251	32.10	F17
HGL 1.2-12	12	1.2	97	43	52	58	0.59	F1
HGL 2.3-12	12	2.3	177	35	61	67	0.92	F1
HGL 2.9-12B	12	2.9	80	56	98	104	1.20	F1
HGL 3.2-12	12	3.2	134	67	61	67	1.44	F1
HGL 5-12	12	5	90	70	101	107	1.83	F1
HGL 7.5-12F1	12	7.5	151	65	95	101	2.73	F1
HGL 7.5-12F2	12	7.5	151	65	95	101	2.73	F2
HGL 8.5-12	12	8.5	151	65	95	101	3.01	F1
HGL 10-12	12	10	151	65	111	117	3.30	F1
HGL 12-12	12	12	151	99	95	101	4.20	F1
HGL 18-12	12	18	181	77	167	167	6.30	F3
HGL 20-12	12	20	181	77	167	167	6.44	F12
HGL 22-12	12	20	181	77	167	167	6.70	F12
HGL 26-12B	12	26	165	176	125	125	9.20	F13
HGL 28-12	12	28	166	126	174	174	10.20	F13
HGL 33-12	12	33	196	131	155	180	11.00	F5
HGL 45-12	12	45	198	166	174	174	16.20	F13
HGL 45-12B	12	45	198	166	170	170	16.20	F21
HGL 60-12	12	60	229	138	208	212	18.30	F15
HGL 70-12A	12	70	351	167	176	176	24.60	F15
HGL 80-12	12	80	260	169	211	215	28.50	F15
HGL 90-12	12	90	307	169	211	215	30.60	F15
HGL 100-12B	12	100	328	172	214	220	34.20	F17
HGL 120-12B	12	120	331	175	214	239	35.00	F17
HGL 200-12	12	200	530	209	214	218	65.50	F17
HGL 230-12	12	230	522	242	218	222	76.50	F17
HGL 260-12	12	260	521	269	220	224	89.00	F17

DESIGN LIFE

Up To 26Ah 3-5 years
Above 26Ah 10 years

GENERAL FEATURES

Sealed Construction And Able To Be Operated In Any Position.
Maintenance Free.
Heavy Duty Grids.
Low Self Discharge 3%/mth @25°C
Fast Deep Discharge Recovery
More Than 99% Gas Recombination
High Power Density

DC SERIES - AGM TECHNOLOGY

CYCLIC, MARINE, RV, MOBILITY & DEEP CYCLE APPLICATIONS

Battery Type	Volts	Rated Capacity (20hr 1.75v / Cell)(Ah)	Dimensions				Weight (KG)	Terminal Type
			L (mm)	W (mm)	H (mm)	Total H (mm)		
DC Series								
DC 200-6C	6	200	306	169	226	230	30.00	F17
DC 225-6	6	225	244	190	275	275	32.00	Special
DC 24-12	12	24	165	176	125	125	9.20	Special
DC 30-12	12	30	196	131	155	167	11.50	F15
DC 38-12	12	38	198	166	170	170	15.00	F13
DC 70-12	12	70	260	169	211	215	25.00	F15
DC 90-12	12	90	307	169	211	215	30.60	F15
DC 100-12A	12	100	331	175	214	239	34.30	F17
DC 150-12	12	150	484	171	241	241	49.60	F17
DC 180-12	12	180	530	209	214	218	58.50	F17
DC 260-12	12	260	521	269	220	224	89.00	F17

CYCLE LIFE

600@ 75% DOD (Depth Of Discharge)

FEATURES

Extra Heavy Duty Grids.
Deep Discharge Recovery
High Power Density

DCG SERIES - GEL TECHNOLOGY

CYCLIC, MARINE, RV, MOBILITY & DEEP CYCLE APPLICATIONS

Battery Type	Volts	Rated Capacity (20hr 1.75v / Cell)(Ah)	Dimensions				Weight (KG)	Terminal Type
			L (mm)	W (mm)	H (mm)	Total H (mm)		
DC Series								
DCG 24-12	12	24	165	176	125	125	9.20	F14
DCG 30-12	12	30	196	131	155	167	11.50	F15
DCG 38-12	12	38	198	166	174	174	15.00	F13
DCG 50-12	12	50	229	138	208	212	18.00	F15
DCG 70-12	12	70	260	169	211	215	28.20	F15
DCG 90-12	12	90	307	169	211	215	30.60	F15
DCG 100-12B	12	100	331	175	214	218	35.00	F17
DCG 135-12	12	135	341	173	281	287	47.50	F17

CYCLE LIFE

800@ 75% DOD (Depth Of Discharge)

FEATURES

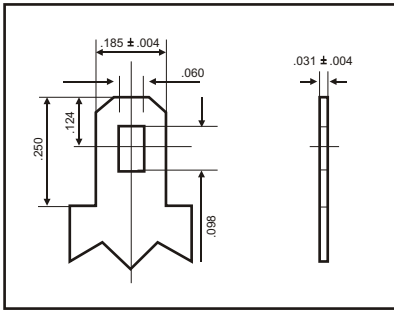
True Gel Technology
High Cyclic Life
High Power Density

APPLICATIONS

Marine, Wheelchairs, Scooters,
Golf Buggies, Recreation, Solar,
RV, Caravans & Pumps

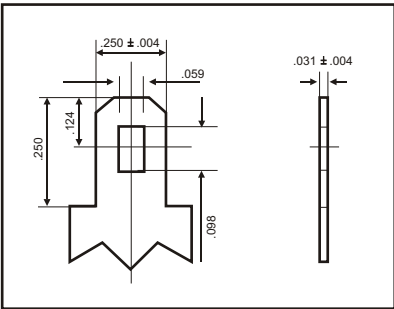
BATTERY TERMINAL

F1

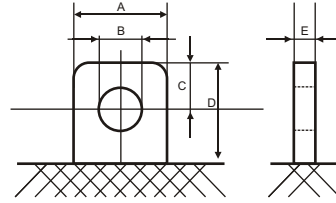


INCH	MM
.250	6.35
.185	4.70
.124	3.15
.098	2.50
.060	1.52
.031	0.79
.004	0.10

F2

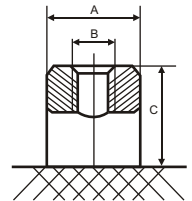


INCH	MM
.250	6.35
.185	3.15
.124	2.50
.098	0.97



Type	A	B	C	D	E
F3	12.0	∅5.5	5.0	11.5	2.0
F4	16.5	∅6.5	8.0	16.0	8.0
F5	16.5	∅8.0	7.5	16.5	6.5
F6	18.5	∅6.5	8.0	19.0	8.0
F7	26.0	∅8.5	11.0	23.0	8.5
F8	25.0	∅10.0	12.5	28.0	8.0
F9	26.0	∅9.0	9.0	19.5	8.5
F10	26.5	∅9.0	12.5	25.5	8.2
F11	24.0	∅10.5	12.5	25.5	8.0

Type	A	B	C
F12	∅10	M5	5.0
F13	∅14	M6	5.0
F14	∅15	M6	5.0
F15	∅16	M6	5.0
F16	∅20	M6	6.0
F17	∅20	M8	7.0



TEMPERATURE CONDITIONS

Recommended temperature ranges for charging, discharging and storing the battery are tabulated below.

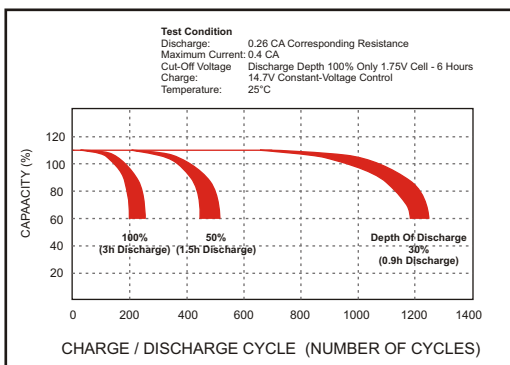
Charge	32°F (0°C) ~ 104°F (40°C)
Discharge	5°F (-15°C) ~ 122°F (50°C)
Storage	5°F (-15°C) ~ 104°F (40°C)

BATTERY LIFE

CYCLE LIFE

Cycle life (number of cycles) of the battery is dependant on the depth of discharge in each cycle. The deeper the discharge is, the shorter the cycle life (smaller number of cycles), providing the same discharge current. The cycle life (number of cycles) of the battery is also related to such factors as the type of battery, charge method, ambient temperature and rest period between charge and discharge. Typical cycle-life characteristics of the battery by different charge/discharge conditions are shown by the figures below. This data is typical and tested at a well-equipped laboratory. Cycle times are different for each battery model. Cycle times are also different from this data when using batteries under real conditions.

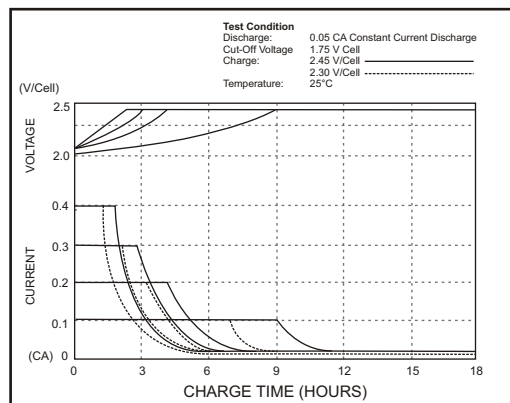
CYCLE LIFE vs DEPTH OF DISCHARGE



CHARGING

Charge characteristics (constant voltage-constant current charging) of SLA batteries are exemplified below.

Example of constant-voltage charge characteristics by current.



In order to fully utilize the characteristics of SLA batteries, constant-voltage charging is recommended.

Charging (Constant Voltage)	Cycle	Initial Charging Current 14.5~14.9V/77°F (25°C)
	Float	13.6~13.8V/77°F (25°C)



SYDNEY(2) • BRISBANE • MELBOURNE • NEWCASTLE
WAGGA WAGGA • ORANGE • TOOWOOMBA • SUNSHINE COAST
PORT MACQUARIE

www.alcobatt.com.au